

2000 DEALER & BUILDER GUIDE

April 2000

Log Home[®] *Living*

Plan, Build & Live The Dream

How To
Choose A
Contractor

Hometime's
Lakeside Lodge

\$3.99
Can \$4.99

Display Until
April 2, 2000



7 25274 01298 5

0 4 >



GROWING GAINS

A sportsman's retreat becomes a dream home

Tony Jansen's Eagle River, Wisconsin, homestead started as a four-car log garage with living quarters above. "We had to have a home for the snowmobiles!" he says. Two years after their garage was built, Tony, his wife Monica and their three sons

enjoy vacations and weekend getaways in their 3,800-square-foot home produced by Tomahawk Log & Country Homes.

It was Tomahawk's proximity to the Jansens' favorite snowmobiling haunts that brought log producer and client together, as Tony

visited the company's office model in the town of Tomahawk, Wisconsin. "We looked at the model, saw what they had to offer and decided they were for us," Tony says.

The attraction was mutual. Tomahawk's Troy Gullo says the

*Story by Cathy Nelson Price
Photography by Glen Sanderson*

Opposite: Solid ash hardwood flooring, tongue-and-groove knotty pine paneling and full-log beams add to the rustic theme of this vacation home. Left: Whimsical touches prevail, such as the birch bark canoe and fishing-themed area rug.

Tomahawk Log & Country Homes photos



Even though this is a vacation home, the Jansens included an efficient kitchen with loads of cabinets, a cooktop island and plenty of lighting. Opposite: The second-floor master bedroom, with its dramatic cathedral ceiling, boasts a private balcony.



Jansens were wonderful to work with. Tomahawk served as both log producer and general contractor. "It's an efficient system when the clients know what they want, as Tony and Monica did," Troy says. "Their building site was in an area where we do a lot of construction, so we know the local subcontractors for plumbing and electricity, as well as local craftsmen." The Jansen home was a turn-key project for Tomahawk: The company oversaw the project from groundbreaking to interior finishing to landscaping, a process completed in about four months. All the Jansens had to do was move in.

When they did, their new home site included full landscaping. A local contractor constructed the rock-lined walk-

ways and tie-log stairs that lead up the naturally graded slope to the house's main entrance.

Built of native Wisconsin red and white pine, the house features 12-inch half-logs, which Troy says offer the largest corners on the half-log market. A tan acrylic caulk was applied between the logs. The roof is hunter green. The Jansens' basic house project cost approximately \$98,000 with an additional \$12,000 for the added decks and porches.

To withstand the rigorous Midwest winters, the house is equipped with low-e, argon-filled windows, with aluminum-clad exteriors. Forced air, heated by a furnace, circulates throughout all three floors.

Starting with Tomahawk's Bearskin floorplan, the Jansens stretched the 28-by-46 foot dimensions to a roomier 30 by 50 feet, keeping the proportions consistent. The added space gives them deeper closets and wider hallways. Eliminating the Bearskin's sunroom, the Jansens added a mudroom and backdoor entry to accommodate their youngsters' outdoor activities.

Another plus for the Jansen boys is a log playset also built by Tomahawk. Its elevated playhouse boasts the same red and white pine construction, topped by the same roofing as the main house. A sliding board opens off one side of the deck; log stairs off the other. An attached swingset and sandbox offer more places to play.





Above: An oversized dormer and gable roof entrance create the impression of a larger home. Right: A winding rock-lined pathway leads to the Jansens' home that was built using 12-inch half-logs with full-log corners.

The Jansen home has three levels, including a walkout basement with its own club room and fireplace. The main floor features a great room with a 23-foot ceiling. The second floor has three bedrooms and two baths, with additional sleeping space in the loft. Two additional guest bedrooms are on the lower level.

For beauty as well as durability, the Jansens chose hardwood flooring of solid ash, with interior walls and ceilings of tongue-and-groove knotty pine, all stained a shade lighter than the logs for an attractive contrast. A full fieldstone chimney accommodates both fireplaces.

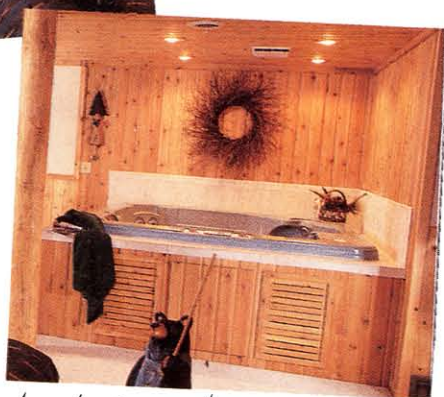
(Continued on page 131)



Log stools surround a rustic bar

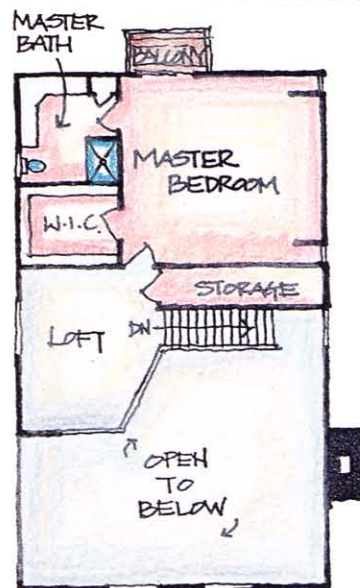


Above and right: The walk-out basement includes little luxuries, such as a fieldstone-faced bar and indoor spa surrounded by the warmth of wood.



A relaxing indoor spa

Notebook



Second Floorplan

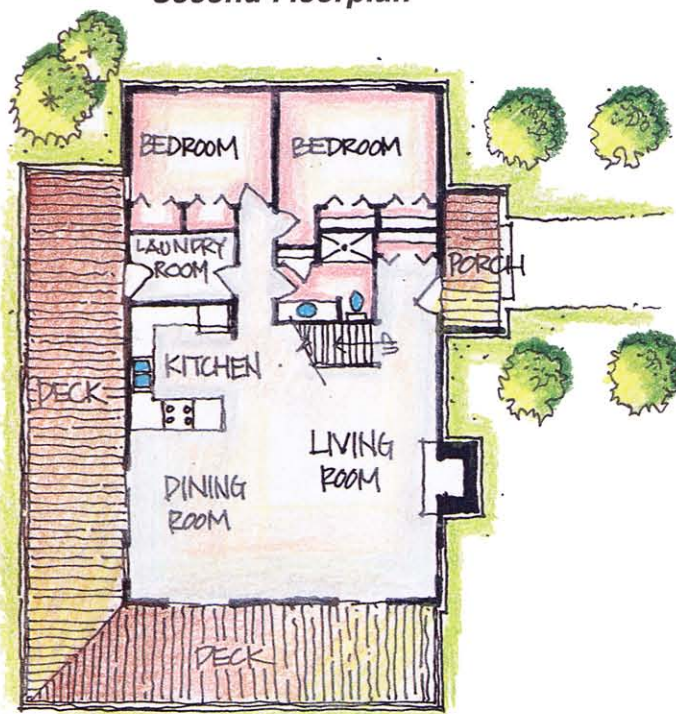


Log package price: \$108,577

Square footage: 2,351

Log producer and architect: Tomahawk Log & Country Homes
Cabinetry: Schrock Cabinet Co.
Caulking: Sashco Sealants
Masonry: Norb Renn Masonry
Roofing: Certainteed Corp.
Stain: Velvit Products Co.
Windows and doors: Weather Shield Windows & Doors

For more information, see Resources.



First Floorplan