

20  
Great Small Plans

New Ideas For Small Homes

# LOG HOME DESIGN IDEAS

*Be inspired*

15 Secrets Of  
Small Home  
Design

Get Organized!  
home storage  
made easy

Display Until November 11, 2003

**PLUS...**

3 small homes we love  
How the pros tackle storage  
Complete guide to stair construction











# small WONDER

Elaborate landscaping complements a chalet-style retirement home on a private Indiana lake

BY PETER LINDBLAD



Along with a waterfall and steps made of stone and treated lumber, this bridge lends a courtyard feel to Audrey and Don Entenman's yard. An 8-foot wide front porch (above) runs the width of the house. Thick pine posts give it a sturdy appearance. "It's not flimsy," Don says. "It has a good massive look."

PHOTOS BY ROGER WADE  
STYLING BY DEBRA GRAHL





Double insulated windows in the dining area look out on Pine Canyon Lake. The juniper table is made of wood from dismantled buildings in Holland. "We had to have a big round table, one where we could fit two families," Don says. "It's better for conversation." A Florida furnituremaker made the corner cabinet (right). "We came across their plant by accident," Don says. "We were impressed by what they did. We had to go back a couple of times with measurements and then we had it shipped up here."

**a**udrey Entenman won't tolerate a messy house, but that doesn't mean she's the type who covers the furniture with plastic.

"I'm fussy," she admits. "I don't like things lying around, but I like things to be comfortable."

"Comfortable" is a good word to describe the log home Audrey shares with her husband, Don, but "cozy" might be more accurate. Built amid majestic pines on a small private lake near Angola, Indiana, the home appears small from the outside. But looks can be deceiving.

"It gives us all the space we need. We wanted that open feeling," Don says. "If you look at the measurements, it doesn't look all that large, but there's an openness. It gives us the feeling we wanted. We didn't want something sprawling."

The main floor and the upstairs master bedroom have a combined 1,600

square feet of living space. But cathedral ceilings make the home feel more spacious. And then there's the finished walkout basement, which adds another 1,100 square feet of living space.

Perfect for hosting guests, like the couple's five grandchildren, the walkout features two bedrooms, a kitchenette and a sizeable living area that rivals the first floor great room. And there's a big storage closet and plenty of cabinets "so there's no excuse not to put things where they're supposed to go," Audrey says with a laugh.

## What A Find

Some say Pine Canyon Lake boasts the purest waters in Indiana. At the very least, it's one of the most picturesque. What's more, it offers privacy.

"It's not a huge lake, but it claims to be the cleanest because there's no agricultural run-off," Don says. "There's a lot

of beach frontage. The house is set back about 110 feet from the water and then, from the house, it's about 420 feet to the road."

The Entenmans bought the property, discovered by one of their three sons, about five years ago. They were living in a Victorian home in Ohio, where Don owns a roofing and sheet metal business. At first, they went up on weekends to fish, host cookouts and have picnics. A little more than two years ago, the couple decided to build their retirement home there.

Construction began after a six-month design process, and was finished in 2001 seven months later.

## Only Natural

It seemed only natural that the Entenmans would build a log home set back in the trees. "It conforms to the surrounding area," Don says.





## You Can Never Have Too Much Storage

Storage is at a premium in every home, but it's even more important in a small home like the Entenmans'. Don and Audrey made sure their closets were big and they built a 26x22 double garage with a wide open area above for extra storage.

They also did little things like designing the kitchenette cabinets with slots for cookie sheets, leaving adequate room for pots and pans.

out to the lake. The lot is only 110 feet wide and thick with pine trees everyone wanted to keep. A ravine on the property is protected by a 40-foot drainage easement. There wasn't much room to build.

"Even if you take the 40-foot easement out, the covenants and restrictions were very tight," Foor says. "There was only about 45 feet to work with. It's a pretty site, gorgeous really. But we had to build somewhat of a narrow home because of the width of the lot."

## First Choice

Choosing Foor and Tomahawk Log Homes wasn't just a matter of convenience for the Entenmans. For one thing, they preferred the lighter tones of Tomahawk's northern white pine log to all the rest.

"We looked at some pine that came out of the South and we just weren't impressed," Don says. "Southern pine is darker."

The home was built with Tomahawk's Energy-Log System, which features 6-inch half-logs spiked into the home's 2x6 framing system and the logs directly below them. For the corners,

The kitchen's center island provides extra storage, with cabinets and drawers on the opposite side. Originally L-shaped, the island was modified "because we felt it stuck out too much," says Don Entenman. "It came out as a slight 'U' shape."

Deer and other wildlife drop by all the time. One reason why: they like the deep winding ravine that slices through the property. "It's about 60 feet wide and there's a lot of growth and wildlife there," Don relates.

Steve Foor of Foor Log Homes, a Tomahawk Log Homes dealership, is the Entenmans' neighbor. Foor designed their home, basing it off Tomahawk's Pokagon floor plan. His architectural skills were required after the couple's first architect submitted sketches with the home supported on stilts, something the couple balked at. Foor went a different route. He pushed hard for the walkout basement. In the end, it made

all the difference.

"The site lent itself to one," Foor says. "As you come up the driveway it's relatively flat, but where they wanted to put the house, the land falls off sharply, so there really wasn't any other choice, unless they moved it back to the flat part. Then they would have been too far from the lake."

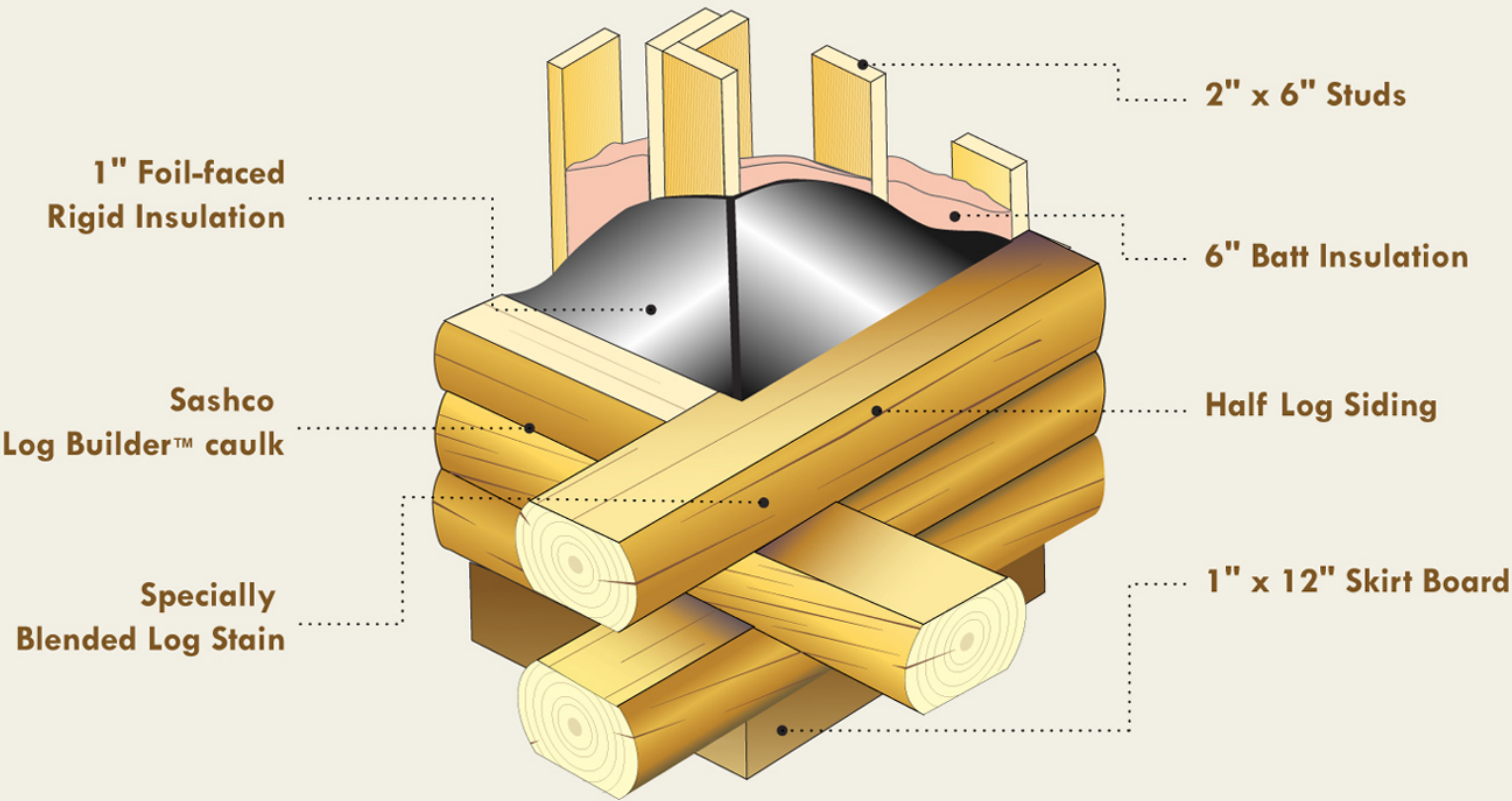
It took six months to come up with finished floor plans. Finding a way to make the house fit the property wasn't easy. "It was somewhat challenging, almost like you were building into the side of a cliff," Foor says.

Sloping gradually, the one-acre property breaks sharply before flattening





Full-log beams span the cathedral ceilings that rise 25 feet above the main level living area (right). The fireplace is faced with Cultured Stone. Drywall breaks up log accents inside the home. The pine stairway that leads to the loft (above) was part of the package from Tomahawk Log Homes. A series of 7" to 8" diameter support posts provide reinforcement.



Tomahawk used its Energy-Log system to build Don and Audrey Entenman's log home. The half-log system is designed to eliminate warping, twisting and settling problems, and walls are heavily insulated to keep out the cold. The system also allowed the couple to drywall interior spaces and incorporate color that contrasts with the logs.

*Illustration courtesy Tomahawk Log & Country Homes, Inc.*





The master bedroom looks out over the property's meandering ravine through this roundtop window. The wood grid that covers the window detaches for easy cleaning.

Tomahawk's Cross-Lok system creates the look of traditional butt-and-pass corners.

## Feature Attractions

There's a lot to love about this chalet-style house, starting with the windows. The master bedroom features a large round top window in a gable dormer. Sliding glass doors allow easy access to the deck and a concrete patio below the deck. Custom green clad, double insulated, lightly tinted trapezoidal windows from Pella look out over the lake from the open main floor living and dining areas.

"It's a little different window treatment than you usually see on a chalet-style home," Floor says, explaining that most homes with flat gable fronts have step-casement windows. Trapezoidal windows are usually installed in prowed front homes.

The open main floor features a combination living/dining/kitchen area. "It's funny how when you have a separate kitchen people gather there in a group," Don says. "The open kitchen flows nicer."

Tongue-and-groove pine ceilings rise more than 25 feet above the first floor living area, with 10-inch full timbers spanning the room. A 7-foot wide fire-

## Think Small

One of the benefits of building a less expensive, smaller log home is it allows homeowners to spend more on amenities. Don and Audrey Entenman's home is proof. The couple was able to install extras like factory finished four-panel doors, Pergo pine flooring and copper gutters. Not wanting to spend a fortune on these features, they created a budget for fixtures before building the home.

"We were able to use more prominent brand names for them, but we tried to stay within line," Don says. "You want to think about plumbing, heating, hardware, things like that."

Don has more advice for people considering building a small log home:

- Design your home so you have good insulation in the side walls and ceilings.
- Even if you don't have a full basement, take steps to prevent cold from coming up through a basement or crawlspace.
- If you have a basement, finish it. "You have to put one in anyway and you're paying for concrete floors, footings and walls," Don says. "You've got this space, so what are you going to do next? With a finished basement, you can have a lot more living area at a lower price than adding an extra wing."





This lower level bedroom (left) features a double bed and recessed lighting. "Hanging fixtures just wouldn't be as functional," Don says. "This provides nice overhead lighting." Two sliding glass doors lead from the lower level sitting room (right) to a deck that runs across the back of the house. The antique pine seat against the far wall can be converted into a table by simply inserting a peg.

place faced with Cultured Stone stretches from floor to ceiling in the great room.

Solid 2x6 stud wall framing allowed the couple to drywall interior spaces. "We wanted to pick up some color, not just have all log," Don says. "We have enough log to give accent and with the stone-faced fireplace, the drywall provides nice contrast with the natural wood." It also allowed the Entenmans to insulate their home to the hilt, with a full 6 inches of insulation in the walls.

## Garden Party

Audrey Entenman has been around plants and flowers all her life. As a child, she helped out in the greenhouses her father owned. For her, landscaping was as much a priority as the home itself.

"There's a lot of variation," Audrey

says. "I think we did some rather creative things, like building a waterfall. I wanted a waterfall so badly. I always liked fountains."

A pump feeds water from the lake to the waterfall. "The house sits so far from the lake, and the waterfall kind of ties the lake to the house," says Tina Millgrove of Millgrove Landscaping. "We plowed a pipe up through the ravine, which was tough because there were a lot of tree roots."

Tina worked with Audrey to design the landscaping plan. "The biggest thing was blending the house into the environment, to make it look like it had been there for years," Tina explains.

To that end, they planted an abundance of hostas, various perennials, iris, weigela, boxwoods, rhododendrons, viburnums, a variety of grasses and

over 150 painted Japanese ferns. Stone retaining walls and steps enhance the plantings, as does a small footbridge. Together they give the landscaping a multi-level courtyard presentation.

"Every level has a look that's a little different and fun," Audrey says. "You come down a flagstone path and everything is in a different setting."

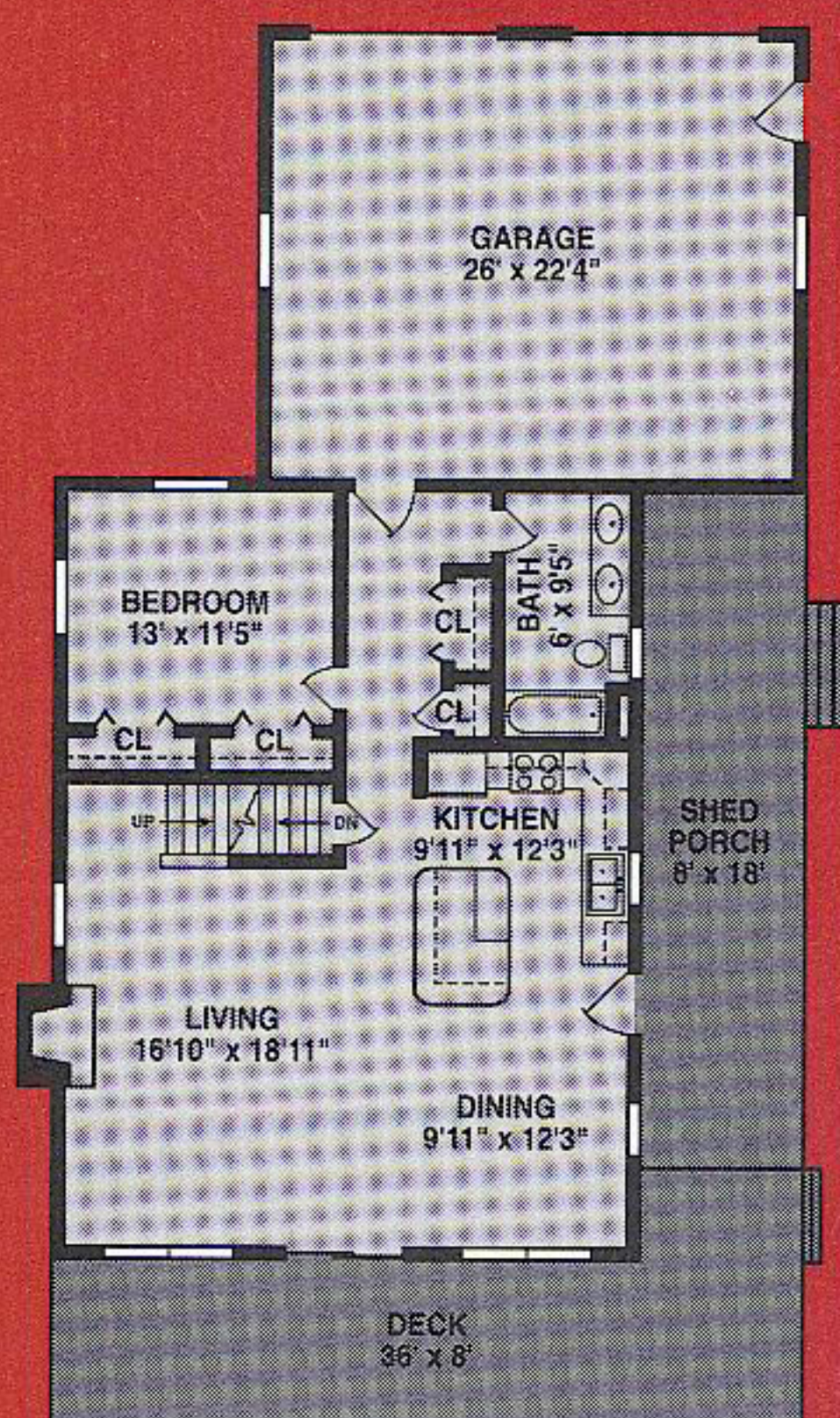
All the elements came together to make the Entenmans' retirement home extraordinary.

"At first I thought it would be too small, but it's amazing what we were able to do with elongating the house and the landscaping," Audrey says. "The two had to go together, with the narrow lot and the design of the home. I don't think the home would be near as beautiful if we hadn't done the landscaping the way we did." 🏡

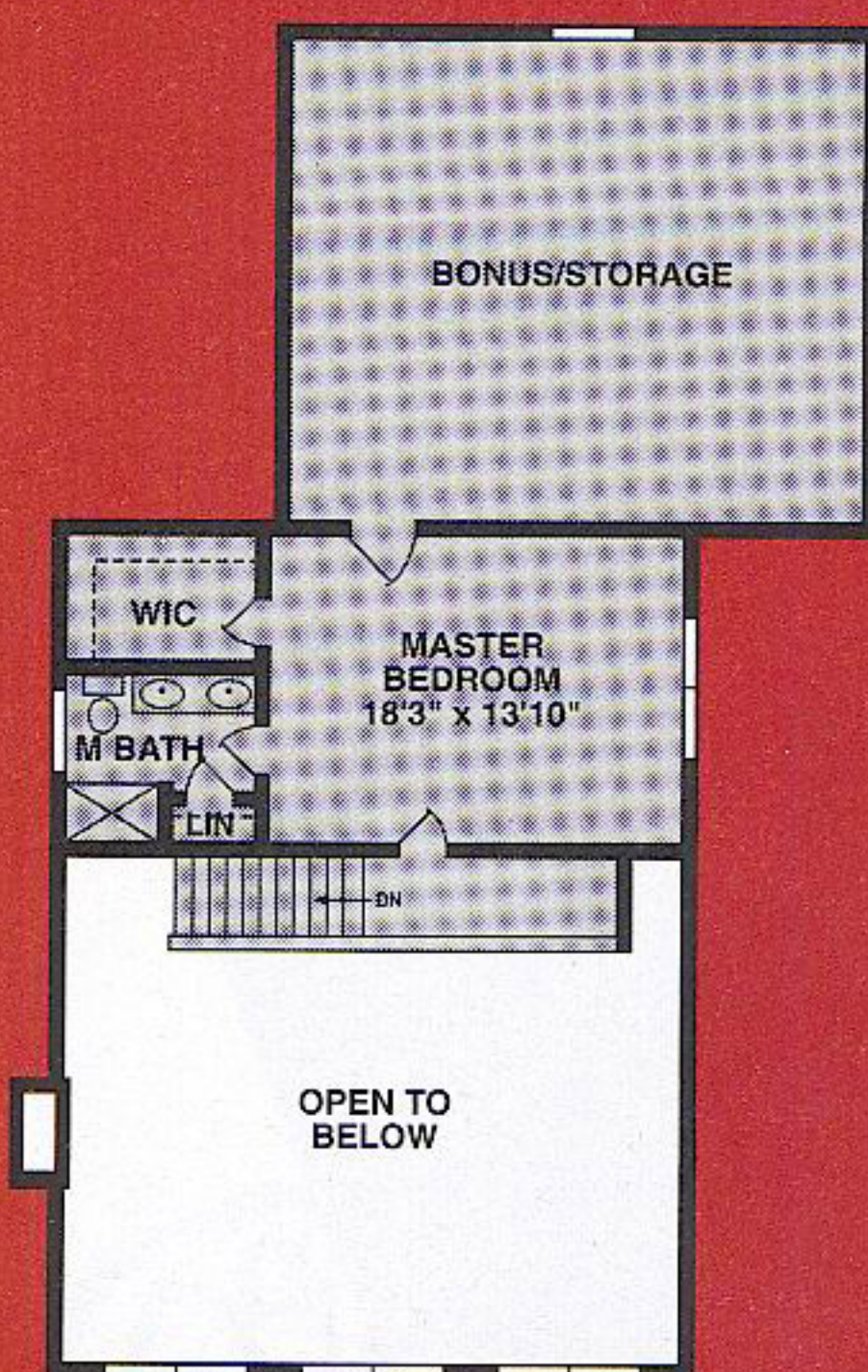


# The Entenman Residence Floor Plan

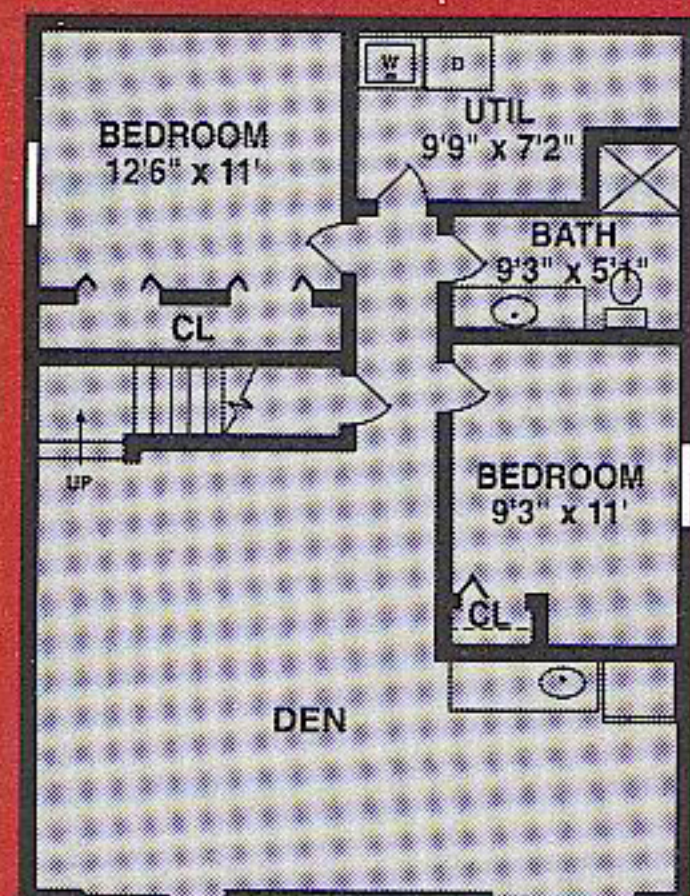
Courtesy Tomahawk Log & Country Homes, Inc.



FIRST FLOOR



SECOND FLOOR



BASEMENT



Angel's Wings, a surprisingly hearty plant, add a splash of color to the landscaping. Jutting from the roof is the gabled dormer that allowed the Entenmans to install a roundtop window in their master bedroom.

## SOURCES:

Tomahawk Log & Country Homes, Inc.  
2285 County L  
Tomahawk, WI 54487  
Phone: 800-544-0636  
[www.tomahawklog.com](http://www.tomahawklog.com)

Pella Corp.  
Phone: 800-84-PELLA

Foor Log Homes, Inc.  
280 Lane  
100A Pine Canyon Lake  
Angola, IN 46703  
Phone: 800-441-5647

Millgrove Lanscaping  
6688 N. 600 W.  
Angola, IN 46703  
Phone: 260-833-2364

Dave Piatek Construction, Inc.  
307 E. Maumee St.  
P.O. Box 210  
Angola, IN 46703  
Phone: 260-668-4900

Cultured Stone  
Phone: 800-255-1727  
[www.culturedstone.com](http://www.culturedstone.com)