

LOG HOME LIVING[®]

Plan, Build
& Live
Your Dream

PORCHES & DECKS

Gain Bonus Living Space

**FLOOR
PLAN
ROUNDUP**
ALL BUDGETS
ALL SIZES

COST-SAVING MAINTENANCE TIPS:

- Keep Logs Looking New Longer
- Design Ideas That Prevent Problems


MAY 2010
\$4.99US \$5.99CAN

Display Until May 10, 2010

0 70989 39196 3 05>

www.loghomeliving.com

please recycle this magazine



Tim and Connie Ramseyer built their vacation home using handcrafted half-logs for the walls and adding larger full logs for character. Inverted-style webbing in the gable porch provides an unobstructed view of the diamond-shaped window beneath the peaked eave. Multicolored flagstone forms the walk leading to the entry (inset), along with shredded bark, pea-sized gravel and rugged rocks lining the man-made creek.

LOGS *Make* *the* DIFFERENCE

*A Wisconsin lakeside home is
the owners' dream come true.*

STORY BY TERESA L. WOLFF

PHOTOS BY ROGER WADE

STYLING BY DEBRA GRAHL





Although Connie and Tim Ramseyer had never lived or even vacationed in a log home, owning one seemed like the realization of the American Dream. So, when they purchased a two-acre lot on a lake in central Wisconsin to build their vacation home, they already knew they wanted logs.

Tim, an experienced general contractor, builder and the owner of Oxford Properties, planned to construct the home with help from his Oxford crew. After considering several different log-home companies, the Illinois couple selected Tomahawk Log & Country Homes. Tim especially liked Tomahawk's system for conventionally framed, fully insulated walls, which are then covered with handcrafted half-logs on both the interior and exterior. He says the system provides greater insulation than full logs, is easier to build and presents fewer construction

issues. He also liked that Tomahawk would assist by applying the half-logs, obtaining construction permits, excavating the driveway, drilling the well and installing the septic system.

To enhance the log look, Tim and Connie wanted large-diameter full logs for character, choosing 16-to-18-inch logs for the posts and collar ties in the great room and at the gable entry. Custom-cut logs frame the great room windows.

Because the couple planned to use the home for vacations and entertaining, they wanted the layout to include areas where the family could convene, enjoy good conversation and have a view of the lake. They sketched out an open floor plan with high ceilings for the main level and two guestrooms and a bath on the upper level above the master bedroom suite, and presented their ideas to Tomahawk, which finalized the drawings.

ABOVE: The sturdy log truss system results in a soaring peaked ridgeline in the great room. Pine tongue-and-groove decking provides an elegant finish for the ceiling. Completing the rustic look, large-diameter, hand-peeled pine logs form a king-post pattern frame for the glass-filled gable.

OPPOSITE: Connie defined the rustic theme in the great room, choosing an overstuffed nail-studded leather couch and chair with an ottoman for comfortable seating in front of the see-through gas-burning fireplace, fashioned from thin-veneer Oakridge moss rock. She added an antler chandelier, a hammered, multicolored copper-topped table and a colorful bench for a cabin feeling. Large-diameter, handcrafted log collar ties and posts provide structural support for the truss system. Hickory flooring completes the all-wood construction.

The Ramseyers took a hands-on approach to the construction of their 2,800-square-foot home. In addition to Tim's role as the general contractor, the couple worked together to create the inte-





rior finishes. Don Glod of Cutting Edge Millwork helped with the interior wood finishes and window placement.

Connie's experience with Oxford Properties, staging and showing homes to prospective buyers and keeping the account books, gave her the confidence to decorate their vacation residence. Her vision was for a rustic casual home that brings the outside indoors. She and Tim purchased aspen log beds for all the bedrooms and brought pieces from their Illinois home that she felt would fit with the decor. This eclectic mix provided the comfortable atmosphere they sought.

Since the Ramseys intend using their vacation log home year round, they equipped it with two gas-burning fireplaces, located in the great room and the

kitchen, and a wood-burning fireplace outdoors on the covered patio. They wanted the look of real stone without the problems caused by excessive weight, so they faced the fireplace with irregular lengths of thin-veneer Oakridge moss rock. "The stone is actually split in half," Tim notes. "Because it is so much lighter than full rocks, we didn't have to worry about reinforcing the floors. This can be a real cost-saving measure without sacrificing the beauty of real stone."

The fireplace in the great room has the added benefit of being see-through, so guests are greeted by warmth when they enter the front foyer. After enjoying a moment admiring the fireplace, they enter the great room. The stacked stone supports the cedar mantel, which adds

a darker wood to the lodge-like setting.

The Ramseys put extra effort into making the kitchen the heart of the home. An open flow to the dining room and a gas-burning fireplace make the space ideal for family and friends to gather. "We didn't want the kitchen cabinets to be typical," Tim explains. "We contracted with Dan Glod to have the knotty alder units stained different colors, alternating black, brown and antique red. We then topped them with crown molding to give the appearance of individual pieces of fine furniture."

Another example of Glod's attention to detail is the lighting, which presented a challenge because the kitchen ceiling is two stories high. Glod put his ingenuity to work by designing and building a



beam system to provide a place to install recessed lighting and hang a chandelier over the kitchen island.

To give each bathroom distinctive appeal, Tim's Oxford Properties crew applied a faux painting and glazed technique to pine tongue-and-groove walls. Hammered copper sinks enhance the uniqueness.

Another example of the Ramseys' handiwork is the exterior light fixture over the front entrance. They weren't able to find one that was bold enough for the extended peaked eave, so they took two lights and welded them together.

Also on the exterior, Tim had a local contractor build an intricate water feature with a wraparound creek flowing into and out of two separate ponds.



ABOVE: Thin-veneer Oakridge moss rock surrounds the cooktop space and slate backsplash in the kitchen. A hammered-copper farm sink adds color and class. Logs support the granite-topped center island, which features a stepped-down, butcher-block prep area. Ingenious beam work supports the island chandelier.

OPPOSITE: Multicolored slate flooring ties the kitchen and dining room together. The knotty alder custom-built cabinets with crown molding are designed to look like they were added over time. A triple-tiered chandelier helps fill the overhead volume.



Irregular stones give the border a rugged look, similar to one they admired while vacationing in Colorado. "When we are sitting on our covered porch, we can hear the water as it flows along the side of the home," Connie says. "It is very soothing and relaxing."

Time at the lake is devoted to relaxing and enjoying the outdoors. Connie and Tim spend their time boating, swimming, playing games, building a fire or watching the chil-

dren float boats down the creek. A special treat is spotting eaglets that perch in the nearby woods.

As they envisioned back when they started, logs make all the difference in creating a warm and cozy environment. "We just feel content here," Tim says. "It is a great place to bring our family and friends to get away from our hectic lifestyle. When we are here we are making memories, and that's what the American Dream is all about." ■

ABOVE: Rugged wall logs and the pine tongue-and-groove ceiling surround the master bedroom in a variety of textures. Connie selected a colorful wool and corduroy comforter for the couple's aspen log bed. Rustic cedar trims the windows and sliding patio door leading to the lakeside porch.

LEFT: Faux-painted texture applied to the pine walls results in a rich copper tone in the master bathroom. Highly veined granite brings out the rich hue of the knotty-alder cabinets from Cutting Edge Millworks. Crown molding and twin hammered-copper sinks add a touch of elegance.



home details

SQUARE FOOTAGE: 2,800

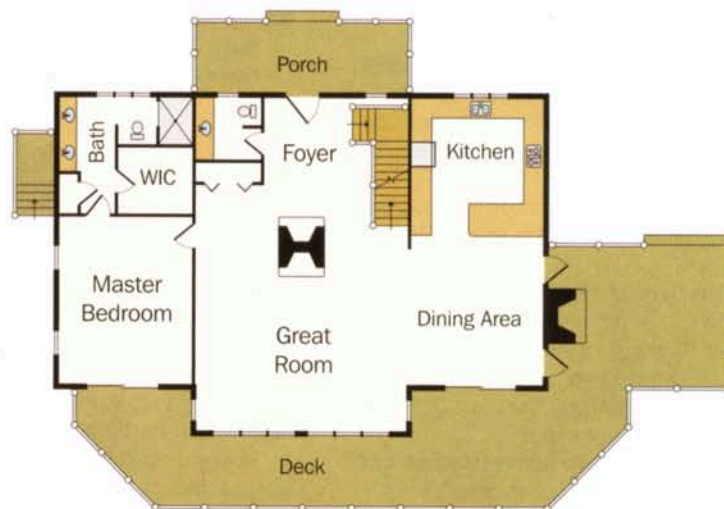
LOG COMPANY: Tomahawk Log & Country Homes

FOR MORE INFORMATION,
SEE RESOURCES ON PAGE 66

A gable-filled window in the great room and twin dormers add to the visual appeal of the exterior. The lakeside deck is accessible from the great room and connects to the covered porch. Tim constructed a creek to flow from the front of the home, around the side under the covered porch and down to a pond.



Upper Level



Main Level