

Country's Best
Log Homes presents

Enter the
Getaway Giveaway!
See p. 10 for details!

Floor Plans

& Design Guide

60+ Designs

for all lifestyles and budgets

24

best plans
of 2008-09

Unique challenges, innovative solutions: 8 great ideas

5 money-saving design hints

Customize your home plan! 10 ways to make it happen

15 square-footage secrets

save on admission to a log-home show: see p 107

fw F+W PUBLICATIONS, INC.

US \$4.99

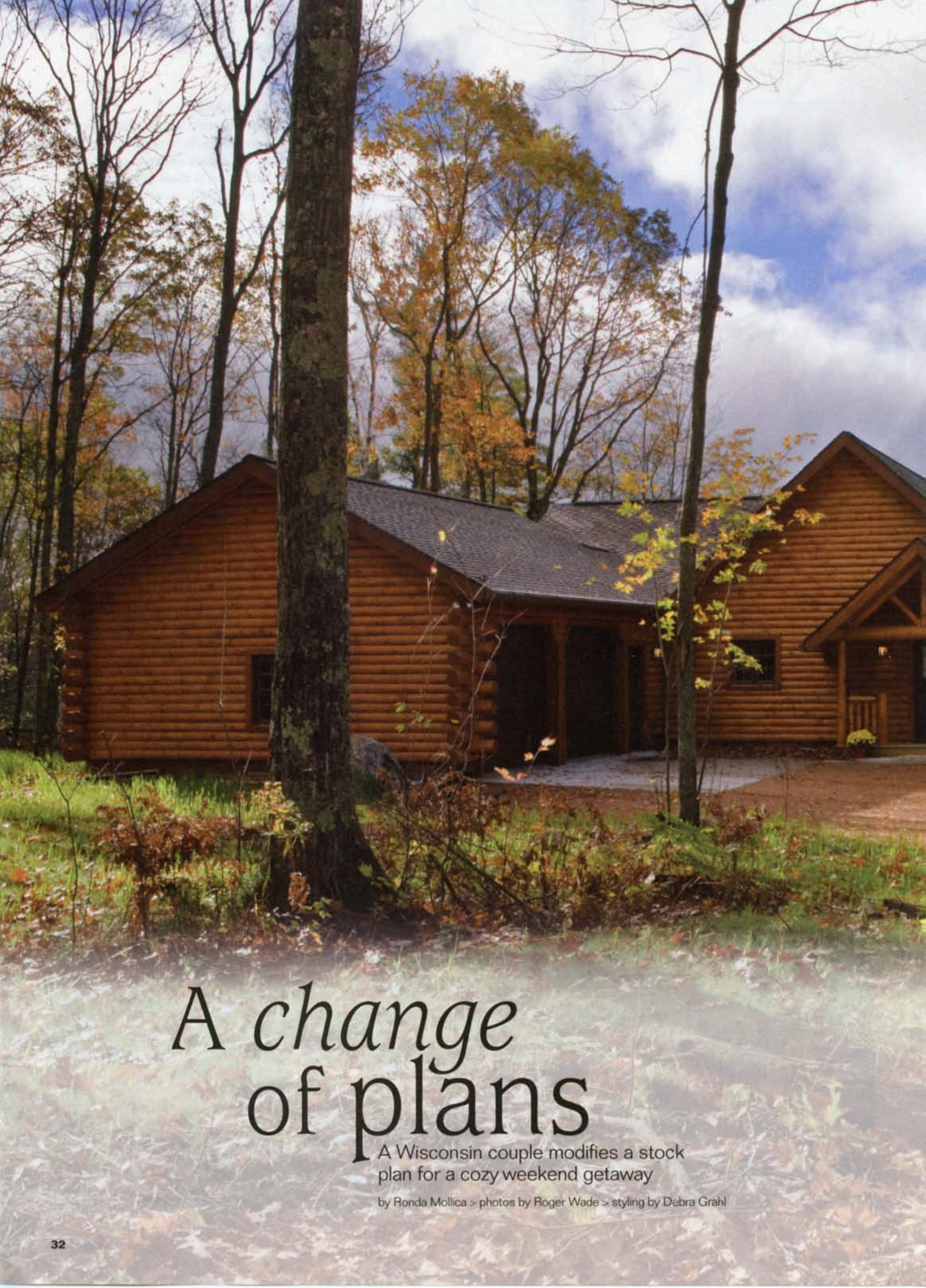


12

2008

0 71486 02221 3

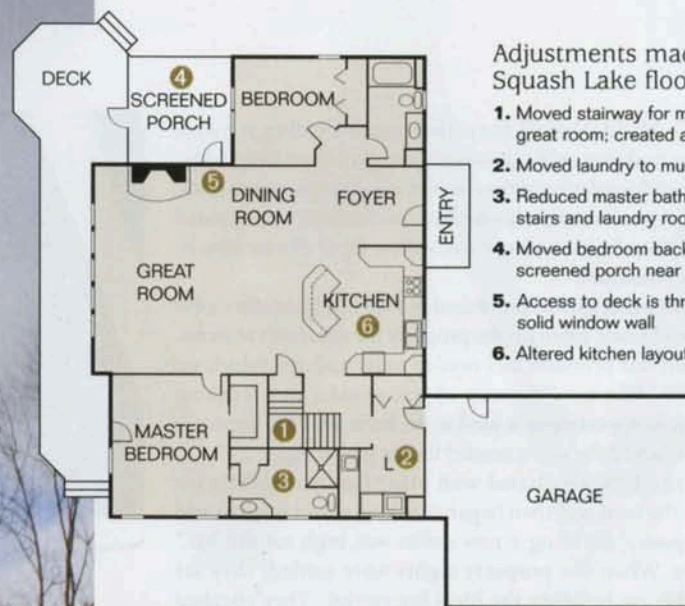
Display until January 18, 2009



A change of plans

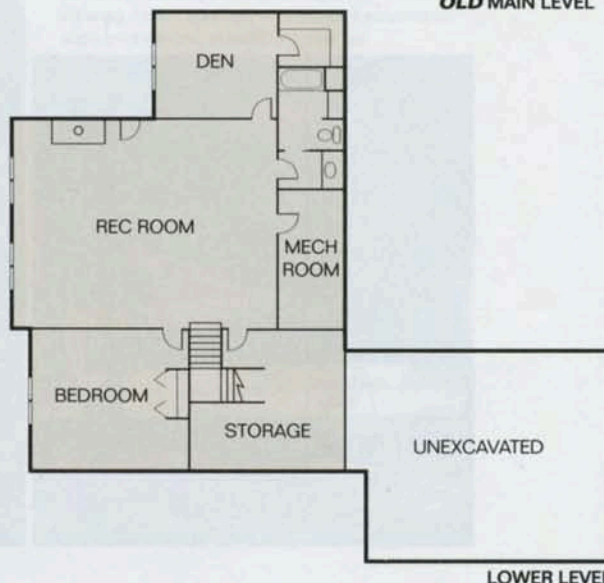
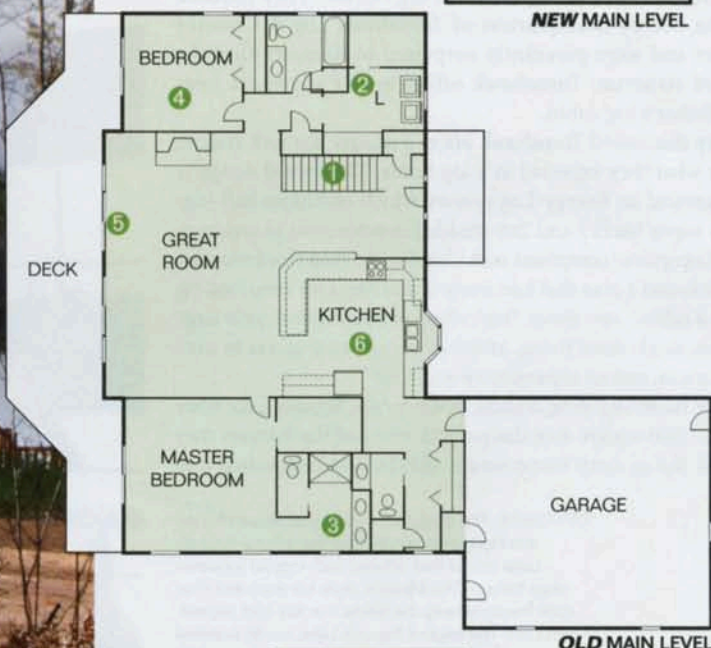
A Wisconsin couple modifies a stock plan for a cozy weekend getaway

by Ronda Mollica > photos by Roger Wade > styling by Debra Grah



Adjustments made to Squash Lake floor plan

1. Moved stairway for more space in the great room; created a dining space
2. Moved laundry to mud room
3. Reduced master bath to accommodate stairs and laundry room (no tub)
4. Moved bedroom back to accommodate a screened porch near deck
5. Access to deck is through the porch; solid window wall
6. Altered kitchen layout; included an island



PLAN NAME: Customized "Squash Lake"

Square footage: 1,752 (main floor)

Bedrooms: 2 (main floor)

Bathrooms: 2 (main floor)

Producer & builder: Tomahawk Log & Country Homes

Log species: 9" saddle-notched white pine Energy-Log

Flooring: Ash

Cabinets: Hickory

Furniture: Broyhill and Chequamegon Wilderness Furniture

Lighting: Avalanche Ranch Light Co.

When you have the perfect getaway setting, it makes little sense to skimp on the getaway home. Steve and Ellie Hodgson and family understood the concept when they began to think about the type of vacation home that could be built on a wooded 200-acre plot of pine and red oak with a small private lake in northern Wisconsin.

The land was originally purchased in 1949 by Ellie's father, who built a small rustic cabin on the property for summer vacations. "The cabin was primitive and needed to be updated, which we did in 1995," Ellie says. "We were all getting older and 'roughing it' was not as appealing as it used to be. Even after the improvements, we lacked the room needed for big gatherings."

Steve and Ellie negotiated with other family members for rights to the land and then began thinking about ways to add livable space. "Building a new cabin was high on the list," Ellie says. When the property rights were settled, they set their sights on building the ideal log retreat. They checked out the nearby headquarters of Tomahawk Log & Country Homes and were pleasantly surprised to discover that the type of structure Tomahawk offers wasn't anywhere near your father's log cabin.

They discovered Tomahawk offers a unique log wall system, unlike what they expected in a log home. The hybrid design is built around an Energy-Log system, which combines half-logs with a vapor barrier and 2x6-studded construction to create an R-30 EnergyStar compliant wall ideal for the cold Northwoods.

"We found a plan that had many of the items we were looking for in a cabin," says Steve, "including an open layout with large kitchen, single floor living, attached garage, easy access to outdoor spaces, and an expansive view of lake."

They narrowed their choices down to the Squash Lake floor plan, a 1,900-square-foot design with many of the features they wanted. But as many homeowners will do, they customized it to

OPPOSITE: The stepped window wall was a change the Hodgsons made from the original Squash Lake model that offered arch-topped windows (see below). The Mission-style furniture and river rock fireplace keep the home low key and relaxed.
BELOW: The original Squash Lake model boasted arch-topped windows in the back, which gave the log home a different architectural style.









match their individual preferences.

"The Hodgsons were able to see a few changes that would help tailor the plan to their liking," says Troy Gullo, sales rep for Tomahawk. "They immediately saw that they could gain space by moving the stairway from the foyer to the side hall near the master bedroom. They were willing to sacrifice space in the master bathroom to allow for this, but they gained dining space near the kitchen."

The Hodgsons also wanted a screened-in porch so they could be outside as much as possible. "We were able to accomplish this by moving the laundry room over to the mud room area and pushing back the guest bedroom," Gullo says. The rear door from the great room was moved to the side near the screened porch, which allowed for a better furniture arrangement in the porch.

A minor change was the kitchen configuration. The Hodgsons opted for a crescent-shaped island rather than a peninsula counter to serve as a lunch table and a prep area. "This works

LEFT: The clean lines of natural wood dining table and black Windsor chairs keeps the space simple and casual. The light fixture, with cedar tree motif, reflects the cabin's Northwoods location.

BELOW: With the addition of the screened porch to the right, the occupants can access the outdoors through a side door rather than cutting across the great room. **OPPOSITE:** The crescent-shaped breakfast counter allows for better traffic flow and more seating.



the guest bedroom was moved back from its original location to accommodate the addition of a screened porch. The focal point of the master bedroom is the view through the wide French doors. The master bed is made of wood stained with two contrasting colors for interest. This blends with the varying colors of the "log cabin" quilt pattern.

RIGHT: The guest bedroom was moved back from its original location to accommodate the addition of a screened porch.
BELOW: The focal point of the master bedroom is the view through the wide French doors. The master bed is made of wood stained with two contrasting colors for interest. This blends with the varying colors of the "log cabin" quilt pattern.



well when we have large groups here for a meal," says Ellie. "It has a much better traffic flow and more seating. We had a family reunion here recently and didn't feel confined at all."

"The rustic and relaxing feel of the home is more than we expected," says Steve. "We really love the big windows, especially our French doors in the bedroom. We have the perfect location for seeing the moon rise over the lake at night."

Once the main floor was organized to the Hodgsons' satisfaction, the couple set their sites on the lower level. The bonus space, created when the lower level was exposed on the lakeside, provides outdoor access and windows, larger than traditional basement openings. "We saw this area as the perfect place for kids, wet dogs, and fishing gear. To us this floor ties the house and family to the property," says Steve.

This floor includes another bedroom, a computer room, storage area, a third full bathroom and another great room with a wood burning stove, full bank of sizeable windows and a French

door leading to the outdoor patio. They covered the floors with a practical vinyl that holds up to sandy shoes and lakeside traffic that gravitate to this area. The walls are half Sheetrock and half red oak wainscoting made of wood taken from the property.

Furnishing the home was easy. Steve and Ellie love the simple lines of Mission furniture, which they selected for the great room along with a few rustic pieces from local stores including their two-toned master bed.

"I brought a few accent pieces from our home in Minnesota," says Ellie, "including souvenirs from trips to Mexico, South America, and Alaska. Steve also made a few end tables that fit in perfectly with the décor."

"We now spend many more weeks here during the summer along with our children and their families, who all live a few hours away," says Steve. "The added space and comfortable living make the lake a relaxing retreat. It has made the Northwoods even more enjoyable." **CBL**



Water we waiting for?

If you're purchasing lake property, you're likely to find that you have a narrow lot. In that case, prioritize which rooms get the lake view and which don't.

A standard plan is a central great room and large deck with a view of the lake, with the kitchen and dining areas on one side of the great room and the master suite on the other. This kind of plan often puts an additional bedroom either over a garage on the inland side of the home or tucked into a loft.

Rooms that require the most privacy (bedrooms, offices, media rooms) can be designed for the inland side of the house.

"We recommend stepped designs, such as having the great room stick out from the house so that it blocks the main-floor master bedroom from your neighbor's view," says Rick Wright, president of Wright Design Studio in Oregon. He also suggests using non-view rooms, such as the garage, to buffer living spaces from neighbors and street traffic.

Lakefront designers may want to take advantage of their sloping lots to incorporate walkout basements with a large "toy room" and sports entry, making for easier access to the lake. "We always advise lakefront customer to design and rough in a bath in the basement when they build, even if they're not planning to finish off the space for a few years," says Tom Seehafer, sales and design consultant with Tomahawk Log Homes.

Take advantage of decks above the basement level to provide shelter for jet skis, boats, life jackets, and wet swimsuits. Also, designing a walkout or windowed basement as a playroom for younger guests means there's space in the house for kids on rainy days while adults relax in a quieter area.



LEFT: The screened porch was an important addition to the home so that the family could enjoy the outdoors in any weather. The porch became a three-season room with the addition of double-hung windows.



Find more photos of this home online at www.loghomesnetwork.com/hodgson